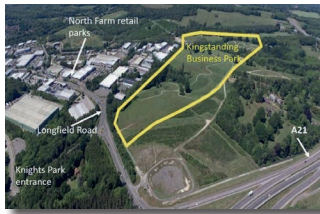


NEWS IN BRIEF FROM ACROSS SHERWOOD WARD

Working to fix Labour's traffic mess

The upcoming Kingstanding business park will bring significant new traffic volumes with 3,700 new workers and warehouse traffic impacting the Knights Wood housing estate entrance, Liptraps / Birken roads and the Blackhurst Lane junction on Pembury Road.



Sherwood Conservatives have been working with residents on solution mitigations via surveys across the ward to resolve the sub-optimal highways design following Sherwood Labour Cllr Hugo Pound's planning motion.

Campaigning for our community

From campaigning to stop the proposed introduction of parking fees in Dunorlan Park to the loss of free parking outside our community centres by the Lib Dem, Alliance and Labour coalition, Nasir has been standing up for our community.



Helping to reduce litter & fly-tipping

Fly tipping, litter and graffiti are key issues highlighted by residents across Sherwood ward.

We have been working to get more council bins installed and we have been leading community litter picking and graffiti clean-up, as well as reporting incidents pro-actively to the Council, including fly-tipping clean-up and enforcement.



SUPPORTING OUR COMMUNITY WITH THE COST OF LIVING



Nasir strongly believes in supporting our community and has recently set up a charity with three other trustees to alleviate digital poverty and to help the environment by refurbishing and distributing donated computers, laptops, printers and smartphones for free to people and community groups who cannot otherwise afford such equipment.

This technology is an essential part of our lives and for some, is a lifeline.

PROTECTING OUR VITAL COMMUNITY CENTRES AND CAR PARKS.

Protecting our vital community centres & car parks from the Labour, Alliance & LibDem coalition.

The coalition voted in March to keep the TN2 community centre and five town-centre car parks on their asset list for possible disposal. The two Sherwood Labour councillors supported this vote.

Your local Conservative councillors voted against this proposal and highlighted it is illogical without formulating car parking and community centre strategies. Please use your vote on the 4th of May to help us to secure & continue investing in our vital community centres and town centre car parks.



NASIR JAMIL

*Standing up for
Sherwood Ward*

Our plan for TUNBRIDGE WELLS BOROUGH



1 SUPPORTING OUR TOWN CENTRES

We successfully secured over £53 million in central government grants to support local retail and businesses to bounce back post pandemic. We will extend first hour free parking across council car parks to support community centres and local businesses.

The LibDem Alliance Labour coalition have hiked parking fees at exactly the wrong time and not consulted local shops.

3 CONTROLLING SPECULATIVE PLANNING APPLICATIONS ON OUR GREEN BELT

We developed a new Local Plan to protect our green spaces from speculative planning applications and to provide strategic management of housing, sports and community facilities for the next 20 years.

The Local Plan has stalled under the LibDem Alliance Labour coalition, it needs Conservative leadership to get it delivered.

5 SOUND COUNCIL FINANCES

The Conservatives left the Council in May 2022 with no external debt, £130 million in assets that generate substantial income, £24 million in reserves & 13 years of consecutive clean external audits.

The LibDem Alliance Labour coalition squandered this strong legacy, leading to unjustified hikes in fees and the resignation of their Finance leader after the car parking fee hike fiasco.

2 HOUSING FOR THE NEXT GENERATION

To support the next generation of homeowners, a record 662 new homes were built during the last year of Conservative control, including 272 new homes allocated as affordable housing with part ownership options starting at 20%.

In comparison new affordable housing has dropped over 80% under the coalition.

4 COMMUNITY CENTRES

Across the borough we worked successfully with parish and town councils to deliver community hubs providing new medical centres for GP practices, community spaces & sports facilities. Both the new Amelia and Southborough centres have made a significant regeneration impact to our town centres.

The LibDem Alliance Labour coalition have failed to build on this success, with no new initiatives put forward.

6 CLIMATE EMERGENCY ACTION

The Council's carbon emissions were reduced by nearly 50% during Conservative control, including installation of solar panels on our leisure and community centres.

Progression of new carbon reduction initiatives has completely stalled under the LibDem Alliance Labour coalition despite their promise of "hitting the ground running"